

Product Specification

Product Details

Product Name Tandem t:90™ and AutoSoft 90™

Product illustration



Product type and intended use Single use infusion set for subcutaneous infusion. The infusion set must be used as described in the Instruction for Use.

Product owner: Unomedical a/s
Aaholmvej 1-3, Osted
4320 Lejre Denmark

Manufacturing Unit: Unomedical Devices S.A de C.V
Avenida Fomento Industrial Lote 9 Manzana 3
Parque Industrial del Norte
Reynosa Tamaulipas
CP 88736
Mexico

Contact Information: Internet: www.infusion-set.com
Email: info.infusion-set@unomedical.com

Drug compatibility/stability tested with: Glulisine, Aspart, Lispro, Regular human insulin

Sterilization: The infusion sets are supplied as sterile single use devices.
The infusion sets are sterilized using ethylene oxide.

Handling: Protect the infusion set from direct sunlight
Storage: Store in a dry place at room temperature
Shelf life: 3 years.
Usage time: Max 72 hours.

Additional information:

- Insertion angle: 90 degrees
- 27 gauge introducer needle
- Soft cannula OD 0.68 mm
- Soft cannula length: 6 mm and 9 mm
- Tubing length: 60 cm (23") and 110 cm (43")
- Tubing ID: 0.385 mm, OD: 1.50 mm
- The product is PVC free
- Not made with natural rubber latex
- The introducer and connector needles may contain up to 10% nickel.
- No raw materials or derivation of animal origin

Variants and Item numbers

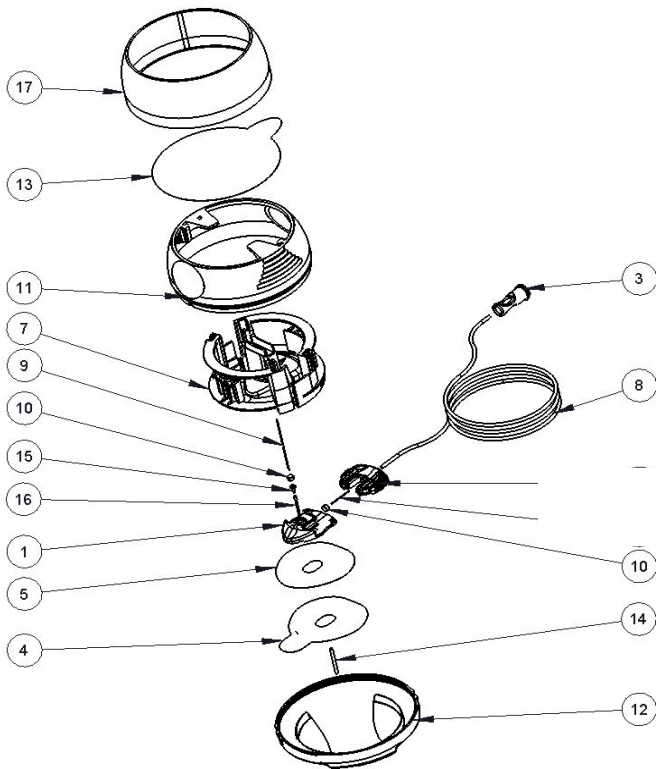
Items number	Tandem Item numbers	Color	Tubing length	Needle length	Pcs. per outer box	Pcs. per Inner box
t:90™						
86-060-5226	005908	Gray	60 cm (23")	6 mm	100	10
86-110-5226	005909	Gray	110 cm (43")	6 mm	100	10
86-060-5229	005910	Gray	60 cm (23")	9 mm	100	10
86-110-5229	005911	Gray	110 cm (43")	9 mm	100	10
86-060-5426	005912	Pink	60 cm (23")	6 mm	100	10
86-060-5429	005913	Pink	60 cm (23")	9 mm	100	10
86-060-5126	005914	Blue	60 cm (23")	6 mm	100	10
86-060-5129	005915	Blue	60 cm (23")	9 mm	100	10
t:90™ 2-pack						
56-060-5226	007231	Gray	60 cm (23")	6 mm	60	2
56-060-5229	007232	Gray	60 cm (23")	9 mm	60	2
AutoSoft 90™ t:lock						
86-060-5286	1000273	Gray	60 cm (23")	6 mm	100	10
86-110-5286	1000274	Gray	110 cm (43")	6 mm	100	10
86-060-5289	1000275	Gray	60 cm (23")	9 mm	100	10
86-110-5289	1000276	Gray	110 cm (43")	9 mm	100	10
86-060-5486	1000277	Pink	60 cm (23")	6 mm	100	10
86-060-5489	1000278	Pink	60 cm (23")	9 mm	100	10
86-060-5186	1000279	Blue	60 cm (23")	6 mm	100	10
86-060-5189	1000280	Blue	60 cm (23")	9 mm	100	10
AutoSoft 90™ t:lock 2-pack						
56-060-5286	1000281	Gray	60 cm (23")	6 mm	60	2
56-060-5289	1000282	Gray	60 cm (23")	9 mm	60	2
AutoSoft 90™ luer						
86-060-5226	1000165	Gray	60 cm (23")	6 mm	100	10
86-110-5226	1000186	Gray	110 cm (43")	6 mm	100	10
86-060-5229	1000187	Gray	60 cm (23")	9 mm	100	10
86-110-5229	1000188	Gray	110 cm (43")	9 mm	100	10
86-060-5426	1000189	Pink	60 cm (23")	6 mm	100	10
86-060-5429	1000190	Pink	60 cm (23")	9 mm	100	10
86-060-5126	1000192	Blue	60 cm (23")	6 mm	100	10
86-060-5129	1000193	Blue	60 cm (23")	9 mm	100	10

Materials

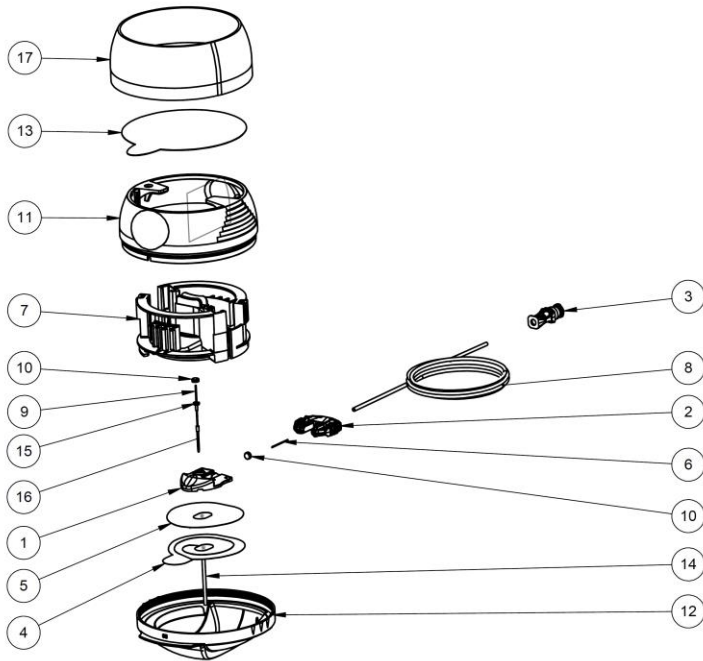
Component Number	Component	Material
1	Cannula Housing	Polypropylene
		Polyethylene and color pigment
2	Connector	Methyl Methacrylate Acrylonitrile Butadiene Styrene (MABS) + colour pigment
3	Standard Luer and t:lock	Methyl Methacrylate Acrylonitrile Butadiene Styrene (MABS) + colour pigment
4	Spiral	Silicone based release paper
5	Adhesive patch	Non-woven polyester with polyacrylate adhesive
6	Connector needle	Stainless steel
7	Spring part	Polyoxymethylene
8	Tubing	Inner: Polyethylene
		Outer: Polyurethane
9	Introducer needle	Stainless steel
10	Membrane	Silicone
11	Outer ring	Polypropylene and colour pigment
12	Lid	Polypropylene and colour pigment
13	Sterile Barrier paper	Polyethylene
14	Needle protector	Polyethylene
15	Bushing	Polycarbonate
16	Catheter	Polytetrafluoroethylene
17	Sleeve	Polyethylene terephthalate

DRAWING

t:90™ and AutoSoft 90™ luer



AutoSoft 90™ t:lock



DISCLAIMER: The data listed in this Product Specification is only intended as product information. Unomedical a/s does not assume responsibility for any results obtained by persons over whose methods Unomedical a/s has not controlled and reviewed. It is the user's responsibility to determine the suitability of Unomedical's products and follow the Instructions for Use. Unomedical a/s further disclaims any damage or injury the user has self-inflicted by not following the Instructions for Use. The infusion set is sterilized as long as the package is unopened. The infusion set cannot be cleaned or re-sterilized.